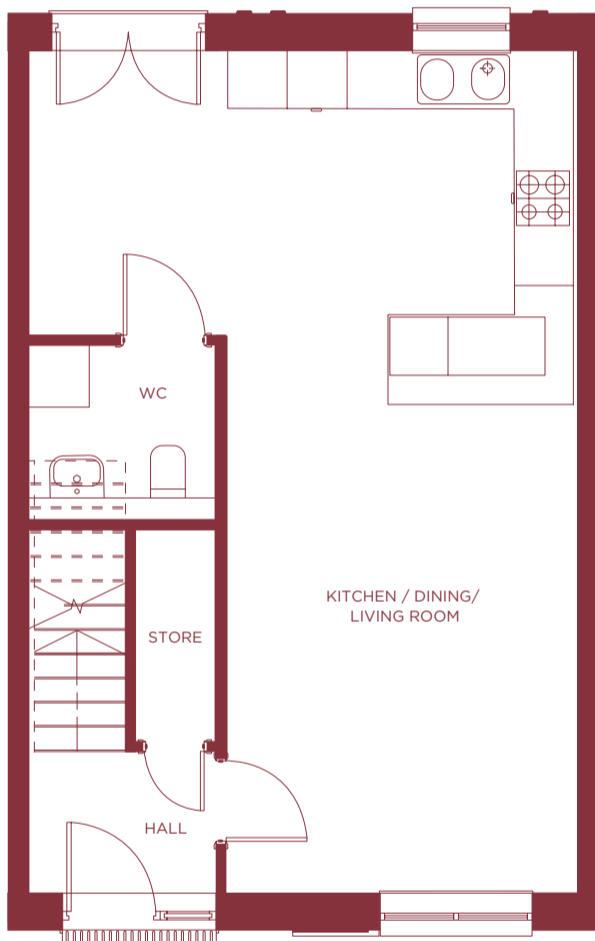


# The Orin

3 bedroom end terrace (LH) | 125.8m<sup>2</sup> / 1,354ft<sup>2</sup>

Plot numbers: 1 & 4

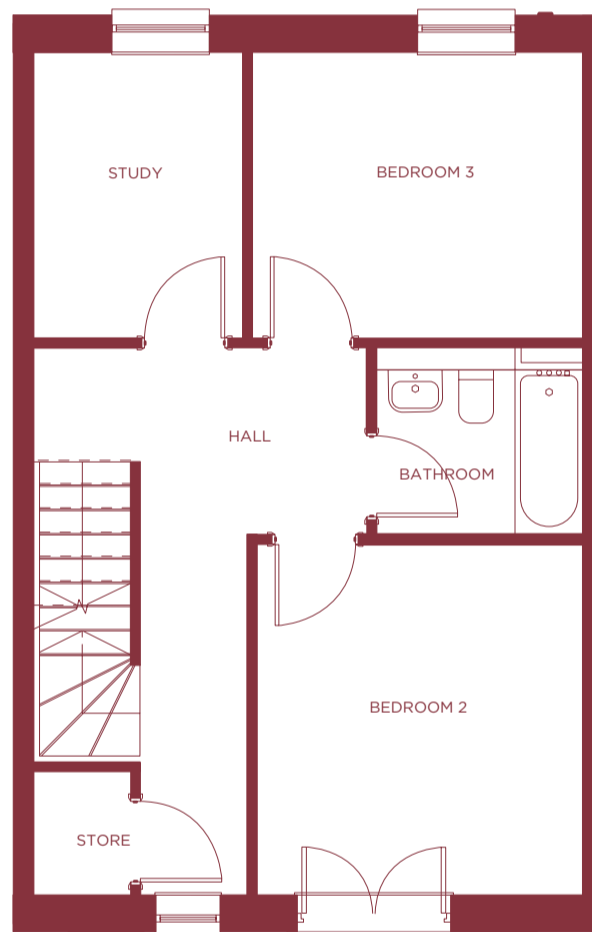


## GROUND FLOOR

Kitchen / Dining / Living Room  
8.69m x 5.55m 28' 6" x 18' 2"

WC  
1.92m x 1.80m 6' 3" x 5' 11"

Store  
2.19m x 0.82m 7' 2" x 2' 8"



## FIRST FLOOR

Bedroom 1  
3.62m x 3.23m 11' 10" x 10' 7"

Bedroom 2  
3.30m x 2.95m 10' 10" x 9' 8"

Study  
2.95m x 2.16m 9' 8" x 7' 1"

Bathroom  
2.13m x 1.93m 6' 11" x 6' 4"

Store  
1.27m x 1.00m 4' 2" x 3' 3"



## SECOND FLOOR

Bedroom 3  
4.45m x 3.69m 14' 7" x 12' 1"

Ensuite  
2.83m x 1.64m 9' 3" x 5' 4"