



CONTEMPORARY
COLLECTION

PLOT 6

1016 SQFT



CCG
HOMES

C O N T E M P O R A R Y

C O L L E C T I O N

P L O T 6

2 B E D R O O M A P A R T M E N T

1 0 1 2 S Q F T

Living / Dining

5.29m x 4.50m
17.3' x 14.6'

Kitchen

3.00m x 4.50m
8.8' x 14.6'

Bedroom 1

4.64m x 3.15m
15.2' x 10.3'

Ensuite

3.15m x 1.81m
10.3' x 5.9'

Bedroom 2

3.72m x 3.13m
12.2' x 10.2'

Bathroom

2.77m x 1.89m
9.0' x 6.2'

Utility

1.30m x 1.17m
4.2' x 3.8'

Hall

1.54m x 3.13m
5.0' x 10.2'

Store

0.68m x 2.14m
2.2' x 7.0'

Terrace

3.75m x 2.77m
12.3' x 9.0'

Wardrobe 1

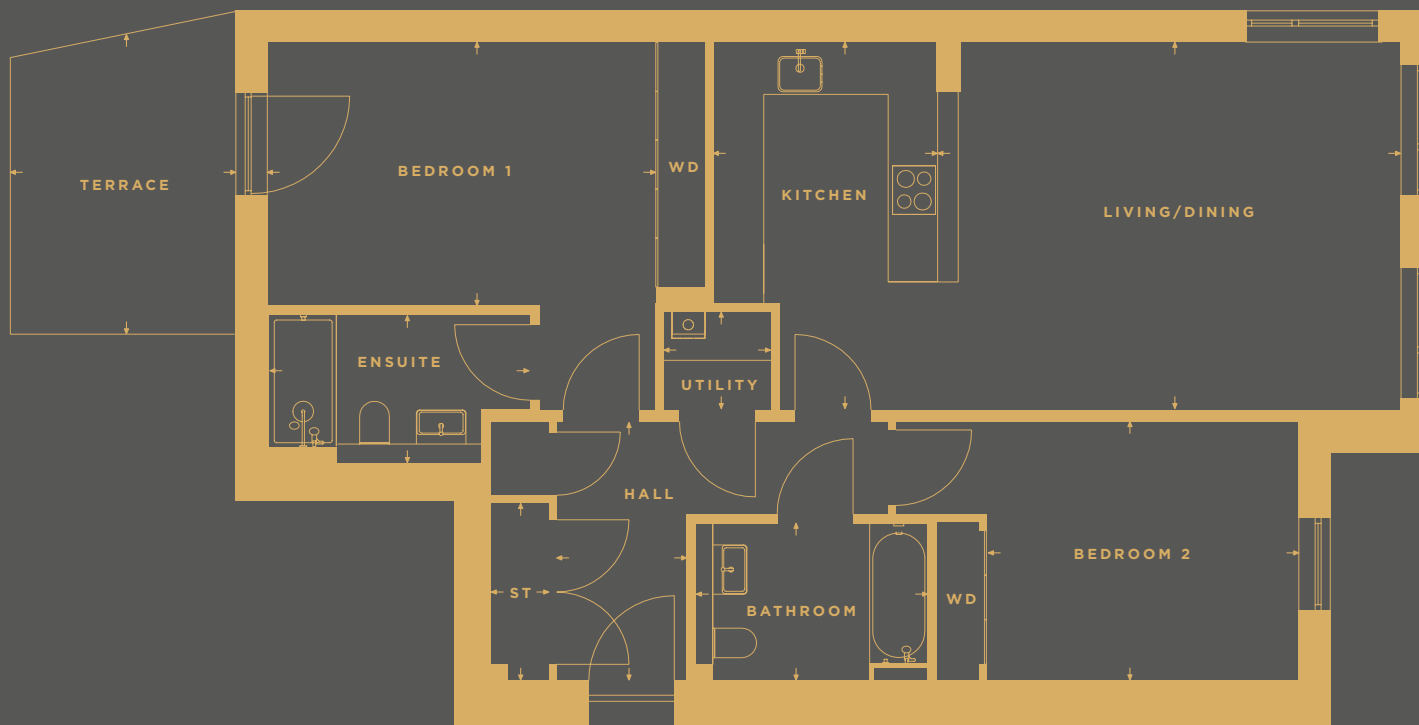
2.95m x 0.57m
9.7' x 1.8'

Wardrobe 2

1.90m x 0.57m
6.2' x 1.8'

Meter

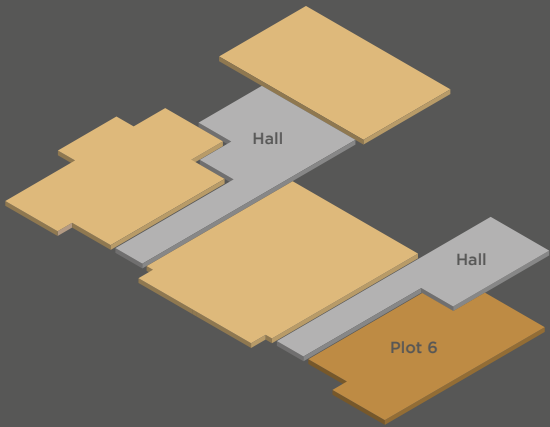
0.69m x 0.90m
2.2' x 2.9'



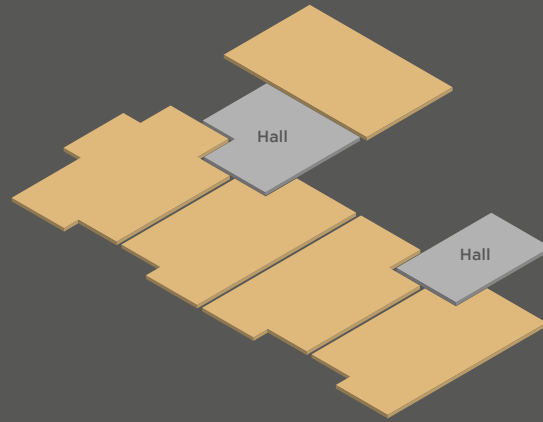
The floorplan provided is of a typical house style. Some elements of the detailing have been digitally enhanced and may vary to that found at Calderwood Lodge. Your sales consultant will be able to provide you with the full details of each plot and house type in this brochure. The particular illustrations and plans presented in this brochure are intended to give a fair description of the property but their accuracy is not guaranteed and they do not form part of any contract. CCG Homes reserve the right to alter property dimensions and specification as necessary.

C O N T E M P O R A R Y
C O L L E C T I O N

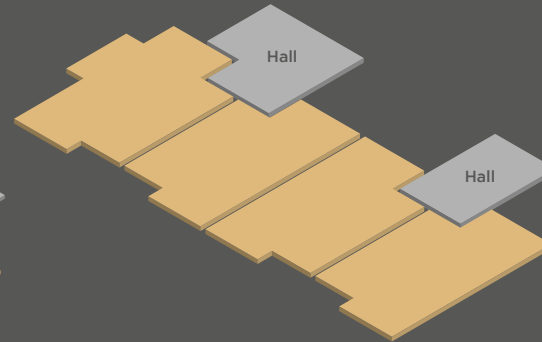
P L O T L O C A T O R



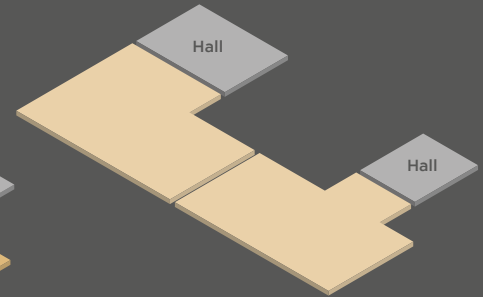
G r o u n d f l o o r



F i r s t f l o o r



S e c o n d f l o o r



T h i r d f l o o r



CONTEMPORARY
COLLECTION

PLOT 7

1026 SQFT



C O N T E M P O R A R Y
C O L L E C T I O N

P L O T 7

2 B E D R O O M A P A R T M E N T
1 0 2 3 S Q F T

Living / Dining
5.52m x 4.47m
18.1' x 14.7'

Utility
1.26m x 1.17m
4.1' x 3.8'

Kitchen
3.00m x 4.47m
9.8' x 14.7'

Hall
2.37m x 2.37m
7.7' x 7.7'

Bedroom 1
4.52m x 3.20m
14.8' x 10.5'

Store
2.37m x 0.70m
7.7' x 2.3'

Ensuite
3.18m x 1.81m
10.4' x 5.9'

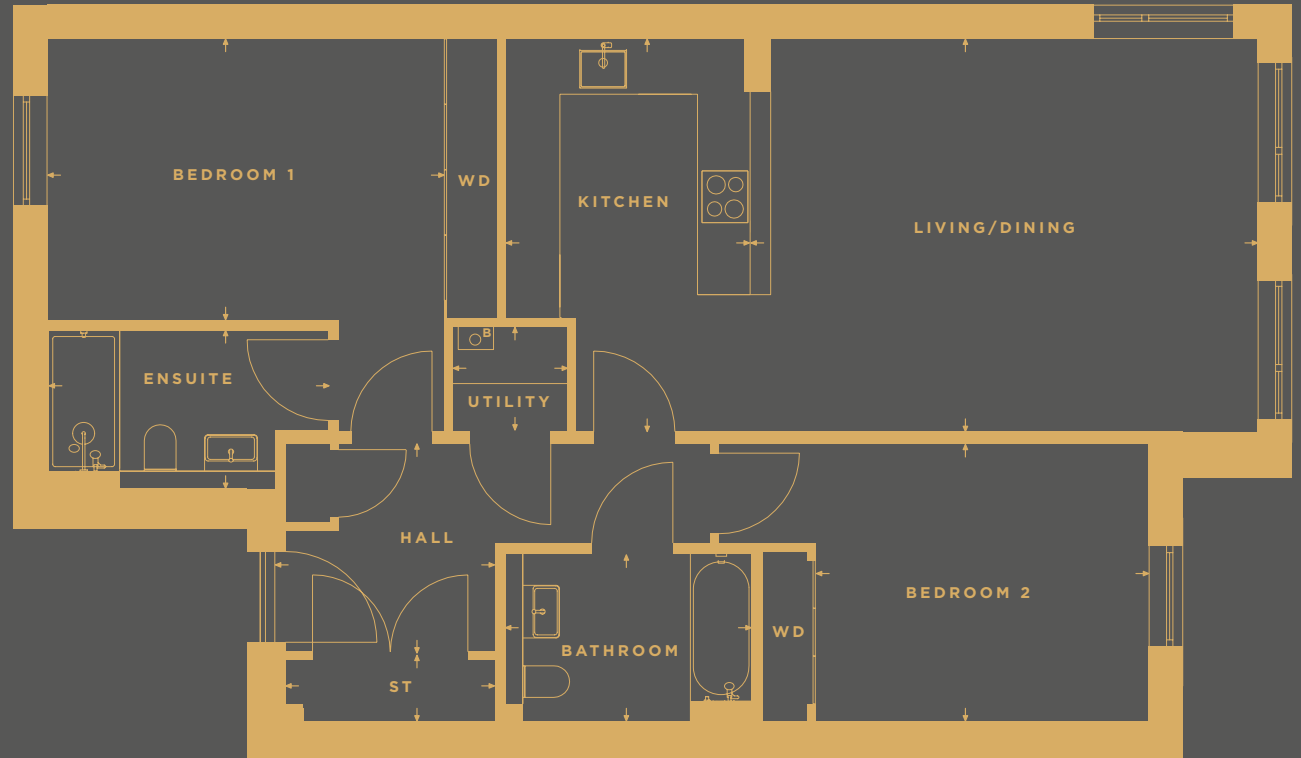
Wardrobe 1
2.98m x 0.57m
9.7' x 1.8'

Bedroom 2
3.78m x 3.16m
12.4' x 10.3'

Wardrobe 2
1.94m x 0.57m
6.3' x 1.8'

Bathroom
2.79m x 1.92m
9.1' x 6.3'

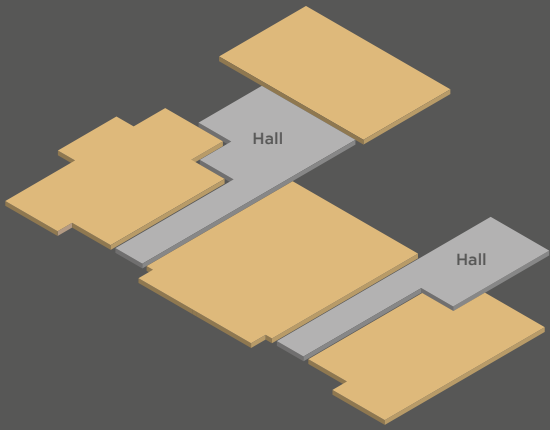
Meter
0.50m x 0.90m
1.6' x 2.9'



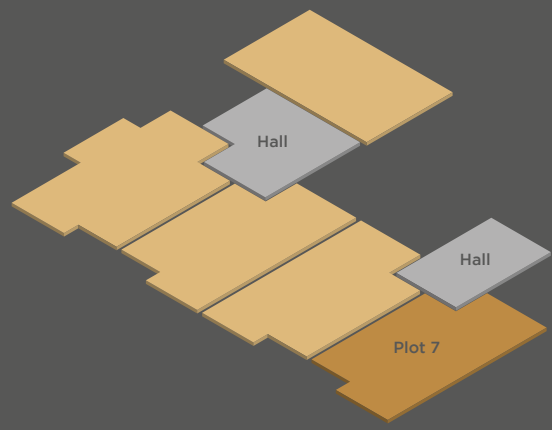
The floorplan provided is of a typical house style. Some elements of the detailing have been digitally enhanced and may vary to that found at Calderwood Lodge. Your sales consultant will be able to provide you with the full details of each plot and house type in this brochure. The particular illustrations and plans presented in this brochure are intended to give a fair description of the property but their accuracy is not guaranteed and they do not form part of any contract. CCG Homes reserve the right to alter property dimensions and specification as necessary.

C O N T E M P O R A R Y
C O L L E C T I O N

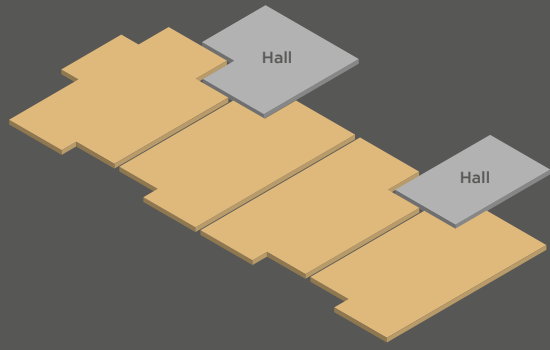
P L O T L O C A T O R



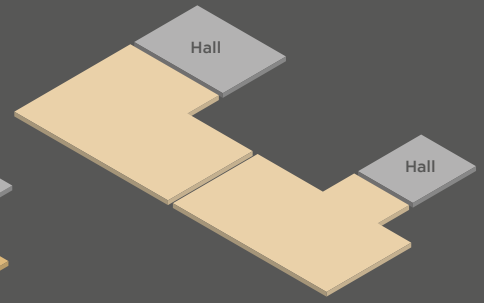
G r o u n d f l o o r



F i r s t f l o o r



S e c o n d f l o o r



T h i r d f l o o r



C O N T E M P O R A R Y

C O L L E C T I O N

P L O T 8

1 0 1 9 S Q F T



C O N T E M P O R A R Y
C O L L E C T I O N

P L O T 8

2 B E D R O O M A P A R T M E N T

1 1 0 9 S Q F T

Living / Dining

5.52m x 4.42m

18.1' x 14.5'

Utility

1.30m x 1.20m

4.2' x 3.9'

Kitchen

3.00m x 4.42m

9.8' x 14.5'

Hall

2.37m x 2.37m

7.7' x 7.7'

Bedroom 1

4.50m x 3.16m

14.7' x 10.3'

Store

2.37m x 0.70m

7.7' x 2.3'

Ensuite

3.16m x 1.81m

10.3' x 5.9'

Wardrobe 1

2.93m x 0.57m

9.6' x 1.8'

Bedroom 2

3.58m x 3.16m

11.7' x 10.3'

Wardrobe 2

1.87m x 0.57m

6.1' x 1.8'

Bathroom

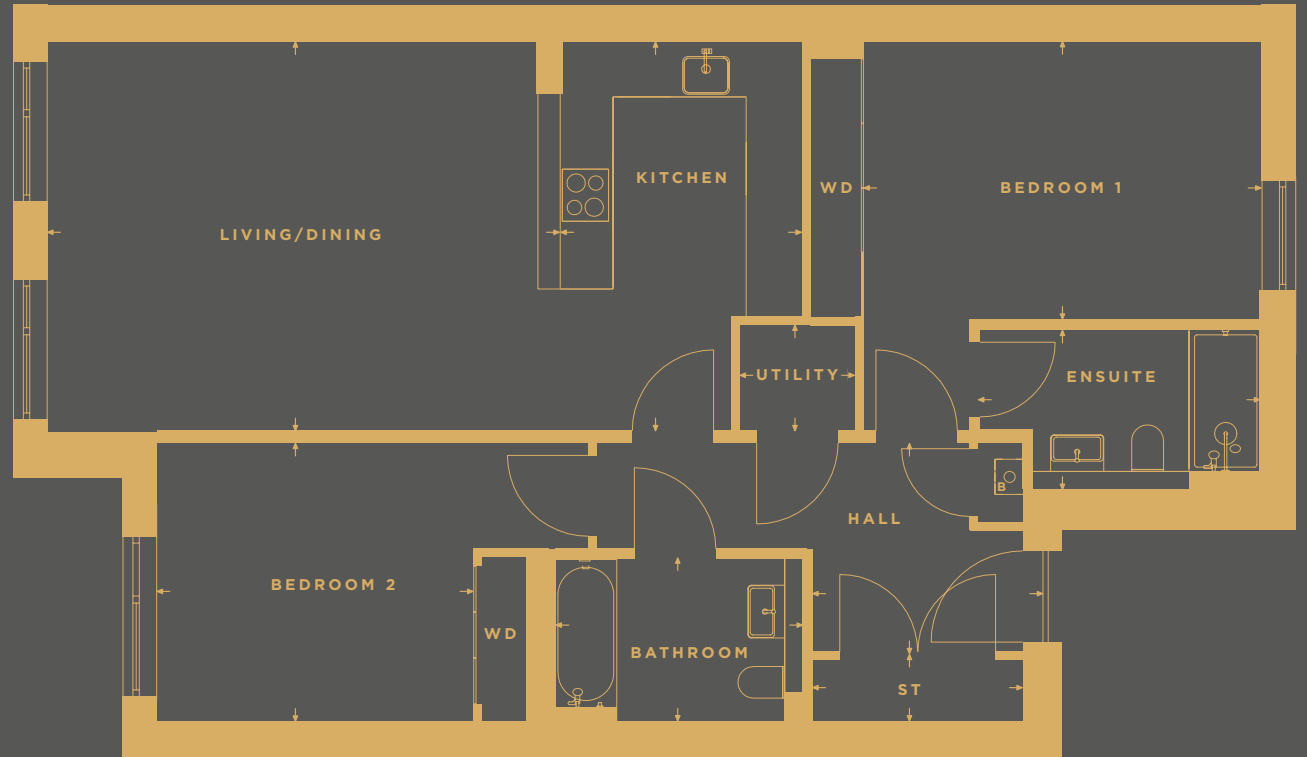
2.80m x 1.85m

9.1' x 6.0'

Meter

0.49m x 0.90m

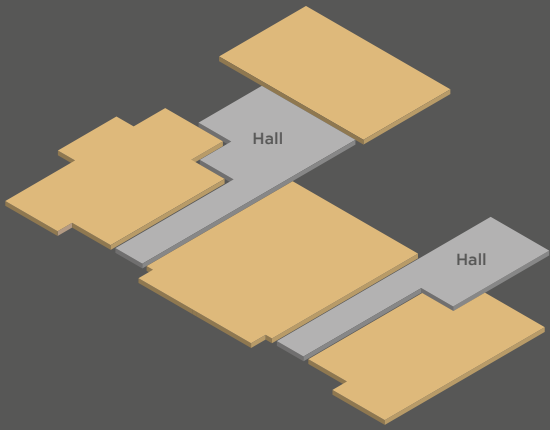
1.6' x 2.9'



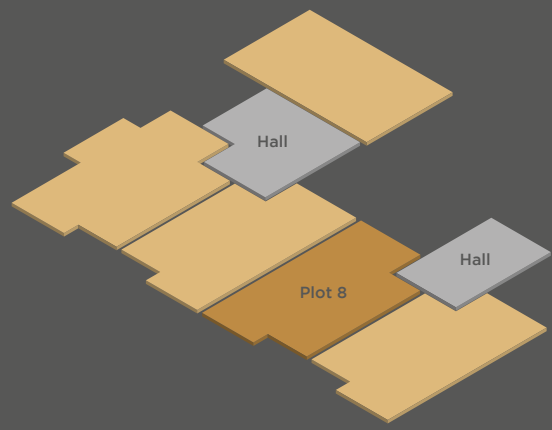
The floorplan provided is of a typical house style. Some elements of the detailing have been digitally enhanced and may vary to that found at Calderwood Lodge. Your sales consultant will be able to provide you with the full details of each plot and house type in this brochure. The particular illustrations and plans presented in this brochure are intended to give a fair description of the property but their accuracy is not guaranteed and they do not form part of any contract. CCG Homes reserve the right to alter property dimensions and specification as necessary.

C O N T E M P O R A R Y
C O L L E C T I O N

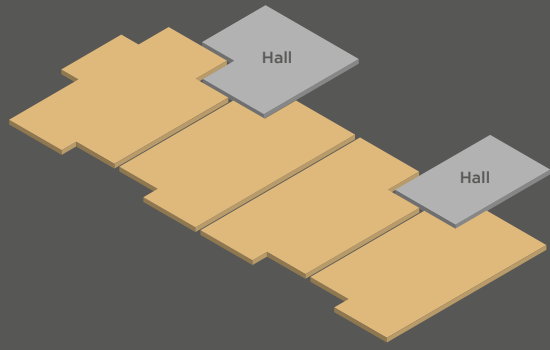
P L O T L O C A T O R



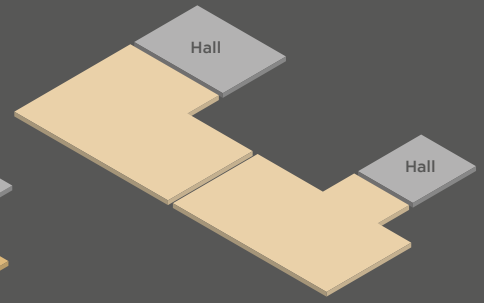
G r o u n d f l o o r



F i r s t f l o o r



S e c o n d f l o o r



T h i r d f l o o r



CONTEMPORARY
COLLECTION

PLOT 9

1026 SQFT



CONTEMPORARY
COLLECTION

PLOT 9

2 BEDROOM APARTMENT

1023 SQFT

Living / Dining

5.52m x 4.47m

18.7' x 14.7'

Utility

1.29m x 1.17m

4.2' x 3.8'

Kitchen

3.00m x 4.47m

9.2' x 14.7'

Hall

2.37m x 2.37m

7.7' x 7.7'

Bedroom 1

4.52m x 3.20m

14.8' x 10.5'

Store

2.37m x 0.70m

7.7' x 2.3'

Ensuite

3.18m x 1.81m

10.4' x 5.9'

Wardrobe 1

2.93m x 0.57m

9.7' x 1.8'

Bedroom 2

3.78m x 3.16m

12.4' x 10.3'

Wardrobe 2

1.93m x 0.57m

6.3' x 1.8'

Bathroom

2.79m x 1.91m

9.1' x 6.2'

Meter

0.48m x 0.90m

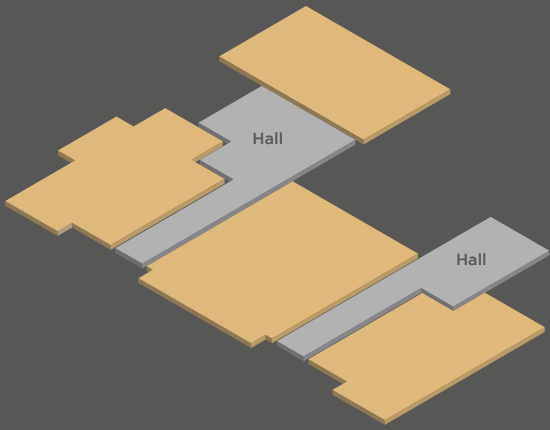
1.6' x 2.9'



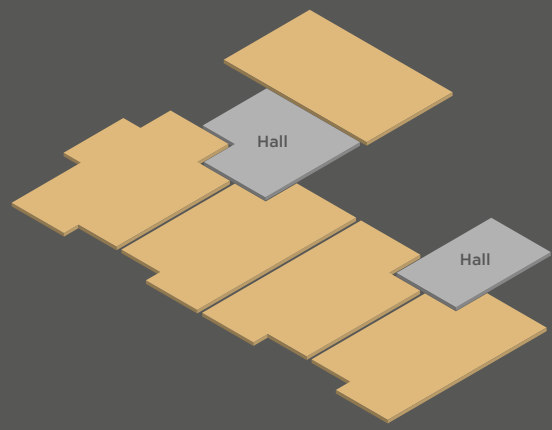
The floorplan provided is of a typical house style. Some elements of the detailing have been digitally enhanced and may vary to that found at Calderwood Lodge. Your sales consultant will be able to provide you with the full details of each plot and house type in this brochure. The particular illustrations and plans presented in this brochure are intended to give a fair description of the property but their accuracy is not guaranteed and they do not form part of any contract. CCG Homes reserve the right to alter property dimensions and specification as necessary.

C O N T E M P O R A R Y
C O L L E C T I O N

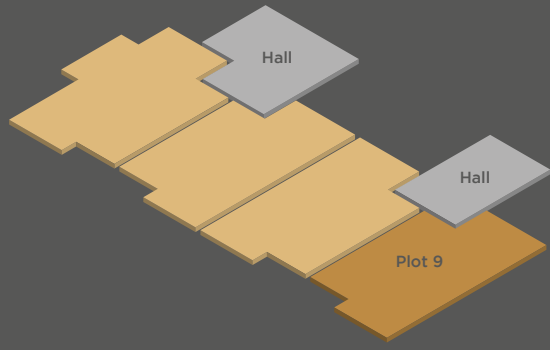
P L O T L O C A T O R



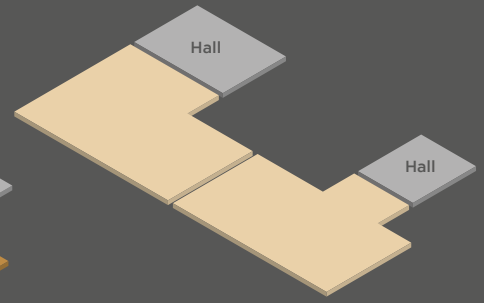
G r o u n d f l o o r



F i r s t f l o o r



S e c o n d f l o o r



T h i r d f l o o r



CONTEMPORARY
COLLECTION

PLOT 10

1019 SQFT



CONTEMPORARY
COLLECTION

PLOT 10

2 BEDROOM APARTMENT
1023 SQFT

Living / Dining
5.52m x 4.42m
18.1' x 14.5'

Utility
1.30m x 1.20m
4.2' x 3.9'

Kitchen
3.00m x 4.42m
9.4' x 14.5'

Hall
2.37m x 2.37m
7.7' x 7.7'

Bedroom 1
4.50m x 3.15m
14.7' x 10.3'

Store
2.37m x 0.70m
7.7' x 2.3'

Ensuite
3.16m x 1.82m
10.3' x 5.9'

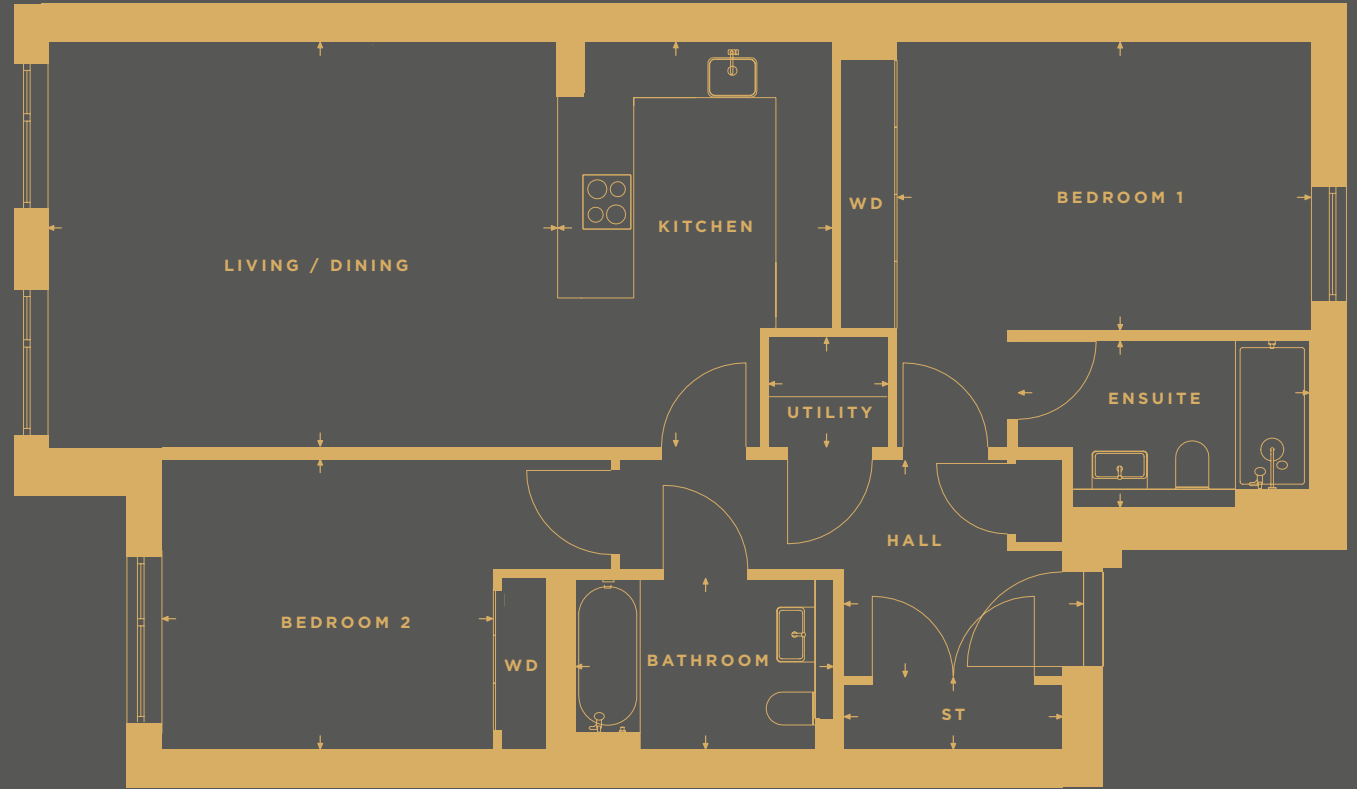
Wardrobe 1
2.93m x 0.57m
9.6' x 1.8'

Bedroom 2
3.58m x 3.16m
11.7' x 10.3'

Wardrobe 2
1.87m x 0.57m
6.1' x 1.8'

Bathroom
2.80m x 1.85m
9.1' x 6.0'

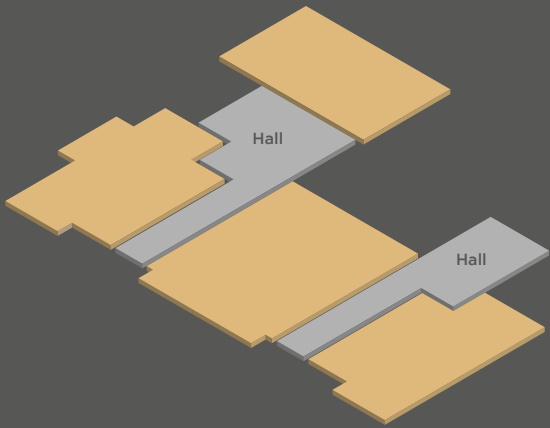
Meter
0.50m x 0.90m
1.6' x 2.9'



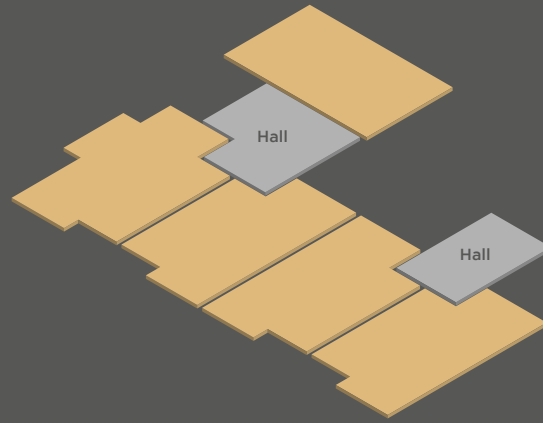
The floorplan provided is of a typical house style. Some elements of the detailing have been digitally enhanced and may vary to that found at Calderwood Lodge. Your sales consultant will be able to provide you with the full details of each plot and house type in this brochure. The particular illustrations and plans presented in this brochure are intended to give a fair description of the property but their accuracy is not guaranteed and they do not form part of any contract. CCG Homes reserve the right to alter property dimensions and specification as necessary.

C O N T E M P O R A R Y
C O L L E C T I O N

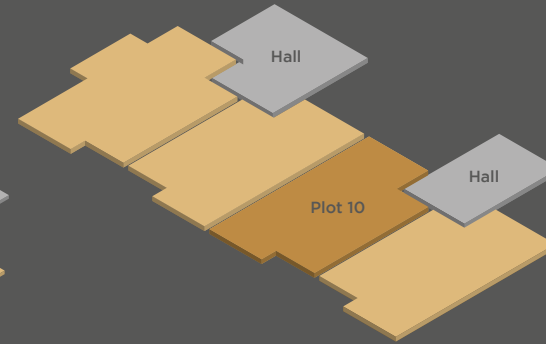
P L O T L O C A T O R



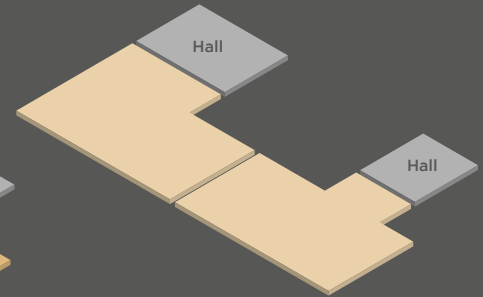
G r o u n d f l o o r



F i r s t f l o o r



S e c o n d f l o o r



T h i r d f l o o r



CONTEMPORARY
COLLECTION

PLOT 12

1555 SQFT



CONTEMPORARY
COLLECTION

PLOT 12
3 BEDROOM APARTMENT
1561 SQFT

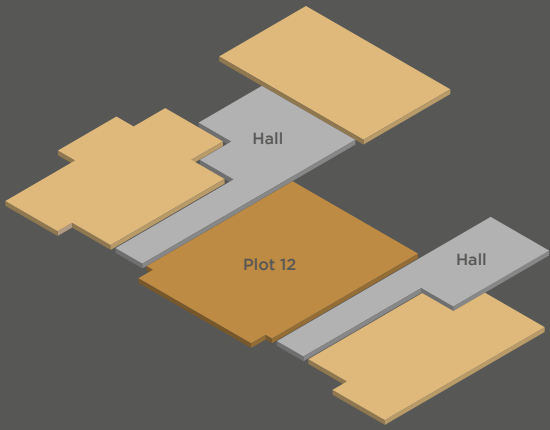
Living 6.59m x 5.47m 21.6' x 18.0'	Bedroom 2 4.75m x 2.75m 15.5' x 9.0'	Terrace 2.75m x 10.80m 9.0' x 35.4'
Kitchen 2.77m x 5.14m 9.1' x 16.8'	Bedroom 3 4.75m x 2.77m 15.5' x 9.1'	Wardrobe 1 4.11m x 0.57m 13.4' x 1.8'
Dining 2.24m x 4.59m 7.2' x 15.0'	Bathroom 2.00m x 2.59m 6.5' x 8.5'	Wardrobe 2 2.34m x 0.57m 7.6' x 1.8'
Bedroom 1 4.11m x 3.70m 13.5' x 12.1'	Utility 2.03m x 2.40m 6.6' x 7.9'	Wardrobe 3 2.31m x 0.57m 7.6' x 1.8'
Ensuite 2.10m x 2.33m 6.8' x 7.6'	Hall 2.10m x 8.15m 6.8' x 26.7'	Meter 1.07m x 0.49m 3.5' x 1.6'



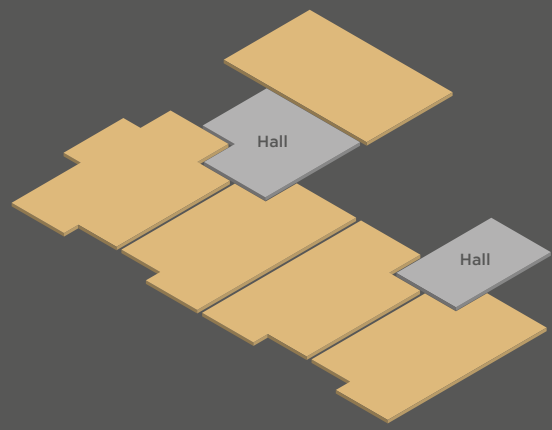
The floorplan provided is of a typical house style. Some elements of the detailing have been digitally enhanced and may vary to that found at Calderwood Lodge. Your sales consultant will be able to provide you with the full details of each plot and house type in this brochure. The particular illustrations and plans presented in this brochure are intended to give a fair description of the property but their accuracy is not guaranteed and they do not form part of any contract. CCG Homes reserve the right to alter property dimensions and specification as necessary.

C O N T E M P O R A R Y
C O L L E C T I O N

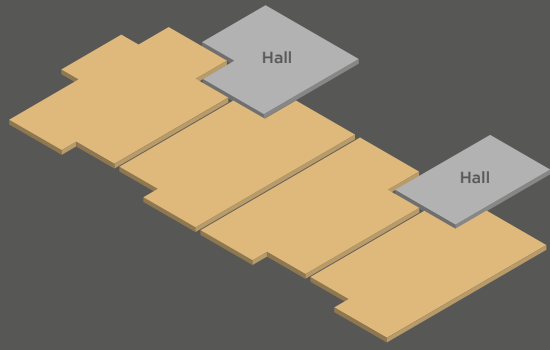
P L O T L O C A T O R



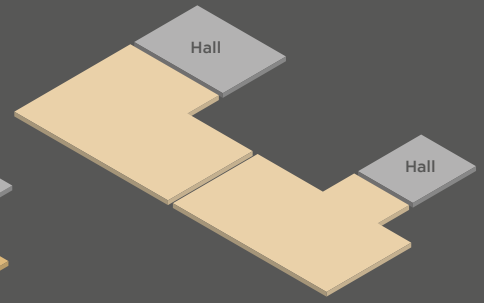
G r o u n d f l o o r



F i r s t f l o o r



S e c o n d f l o o r



T h i r d f l o o r



CONTEMPORARY
COLLECTION

PLOT 13

1104 SQFT



CONTEMPORARY
COLLECTION

PLOT 13

2 BEDROOM APARTMENT

1087 SQFT

Living / Dining

5.30m x 4.47m

17.4' x 14.7'

Kitchen

3.00m x 5.94m

9.9' x 19.4'

Bedroom 1

4.67m x 4.34m

15.3' x 14.2'

Ensuite

2.67m x 1.73m

8.7' x 5.6'

Bedroom 2

3.58m x 3.15m

11.7' x 10.3'

Bathroom

2.76m x 1.84m

9.0' x 6.0'

Utility

1.32m x 1.17m

4.3' x 3.8'

Hall

1.56m x 3.15m

5.1' x 10.3'

Store

2.16m x 0.70m

7.1' x 2.1'

Wardrobe 1

2.60m x 0.60m

8.5' x 1.9'

Wardrobe 2

2.59m x 0.57m

8.5' x 1.8'

Wardrobe 3

1.86m x 0.57m

6.1' x 1.8'

Meter

0.6m x 0.90m

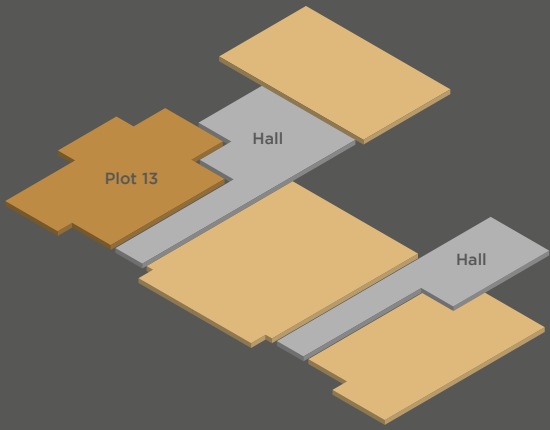
2.1' x 2.9'



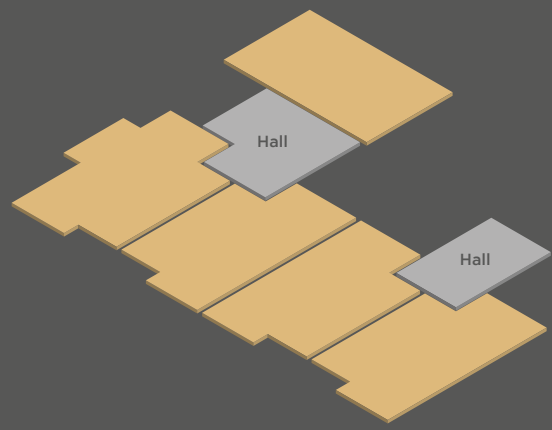
The floorplan provided is of a typical house style. Some elements of the detailing have been digitally enhanced and may vary to that found at Calderwood Lodge. Your sales consultant will be able to provide you with the full details of each plot and house type in this brochure. The particular illustrations and plans presented in this brochure are intended to give a fair description of the property but their accuracy is not guaranteed and they do not form part of any contract. CCG Homes reserve the right to alter property dimensions and specification as necessary.

C O N T E M P O R A R Y
C O L L E C T I O N

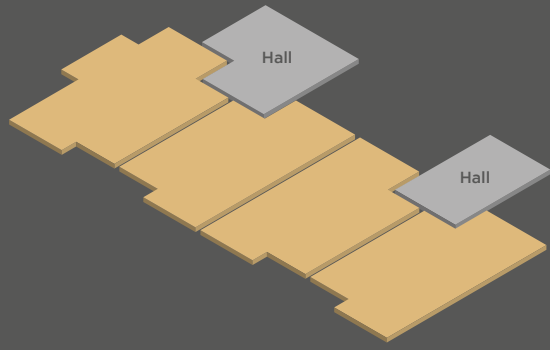
P L O T L O C A T O R



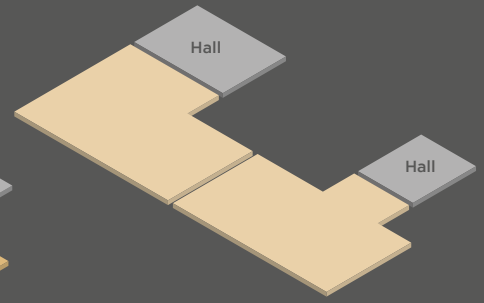
G r o u n d f l o o r



F i r s t f l o o r



S e c o n d f l o o r



T h i r d f l o o r



CONTEMPORARY
COLLECTION

PLOT 14

979 SQFT



C O N T E M P O R A R Y

C O L L E C T I O N

P L O T 1 4

2 B E D R O O M A P A R T M E N T

9 8 0 S Q F T

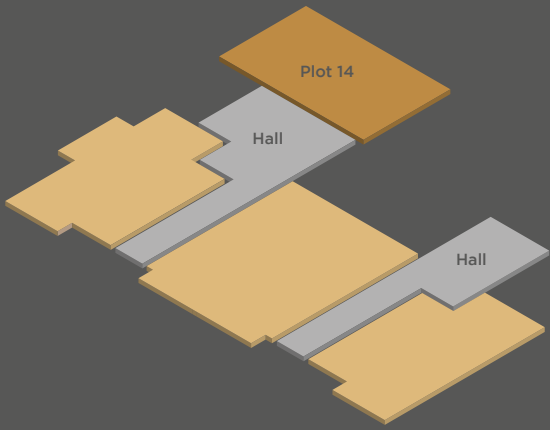
Living 4.70m x 4.79m 15.4' x 15.7'	Hall 3.60m x 3.56m 11.8' x 11.7'
Kitchen / Dining 4.70m x 2.62m 15.4' x 8.6'	Store 0.96m x 0.60m 3.1' x 1.9'
Bedroom 1 3.55m x 3.74m 11.6' x 12.2'	Terrace 9.67m x 3.21m 31.7' x 10.5'
Ensuite 1.71m x 2.40m 5.6' x 7.8'	Wardrobe 1 3.68m x 0.57m 12.0' x 1.8'
Bedroom 2 3.12m x 2.96m 10.2' x 9.7'	Wardrobe 2 1.67m x 0.57m 5.4' x 1.8'
Bathroom 1.91m x 3.11m 6.2' x 10.2'	Meter 0.60m x 0.77m 1.9' x 2.5'
Utility 2.00m x 2.07m 6.5' x 6.8'	



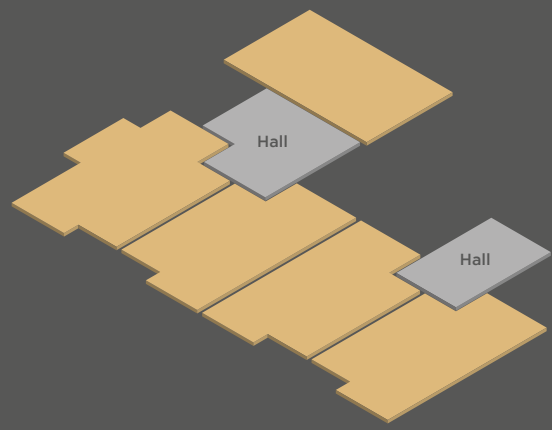
The floorplan provided is of a typical house style. Some elements of the detailing have been digitally enhanced and may vary to that found at Calderwood Lodge. Your sales consultant will be able to provide you with the full details of each plot and house type in this brochure. The particular illustrations and plans presented in this brochure are intended to give a fair description of the property but their accuracy is not guaranteed and they do not form part of any contract. CCG Homes reserve the right to alter property dimensions and specification as necessary.

C O N T E M P O R A R Y
C O L L E C T I O N

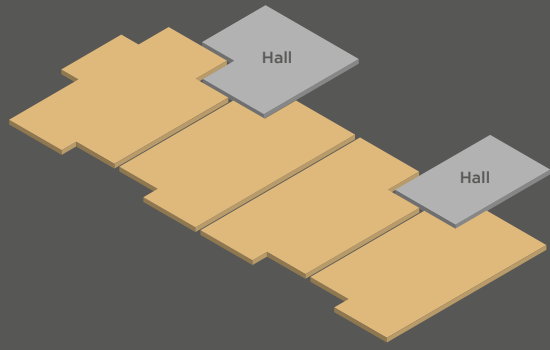
P L O T L O C A T O R



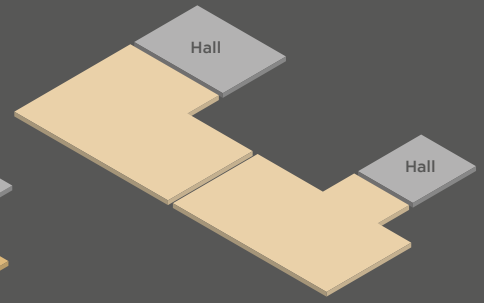
G r o u n d f l o o r



F i r s t f l o o r



S e c o n d f l o o r



T h i r d f l o o r



CONTEMPORARY
COLLECTION

PLOT 15
1019 SQFT



CONTEMPORARY
COLLECTION

PLOT 15

2 BEDROOM APARTMENT

980 SQ FT

Living / Dining

5.52m x 4.42m

19.1' x 14.5'

Kitchen

3.00m x 4.42m

8.8' x 14.5'

Bedroom 1

4.50m x 3.16m

14.7' x 10.3'

Ensuite

3.16m x 1.81m

10.3' x 5.9'

Bedroom 2

3.58m x 3.16m

11.7' x 10.3'

Bathroom

2.79m x 1.85m

9.1' x 6.0'

Utility

1.30m x 1.20m

4.2' x 3.9'

Hall

2.37m x 2.37m

7.7' x 7.7'

Store

2.37m x 0.70m

7.7' x 2.3'

Wardrobe 1

2.93m x 0.57m

9.6' x 1.8'

Wardrobe 2

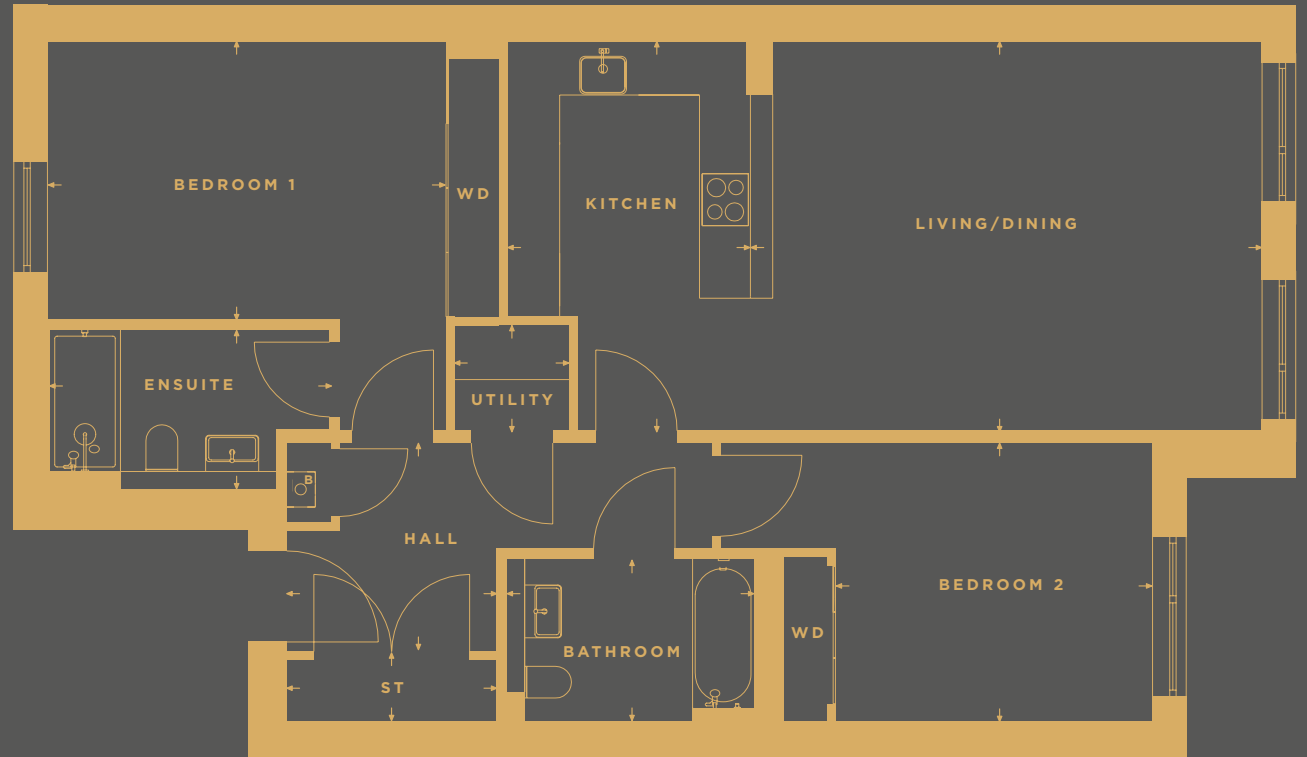
1.87m x 0.57m

6.1' x 1.8'

Meter

0.50m x 0.90m

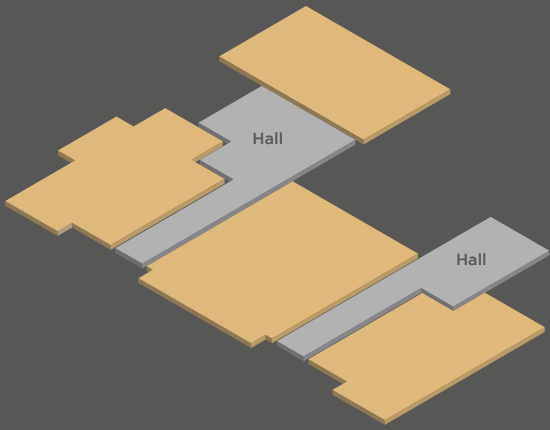
1.6' x 2.9'



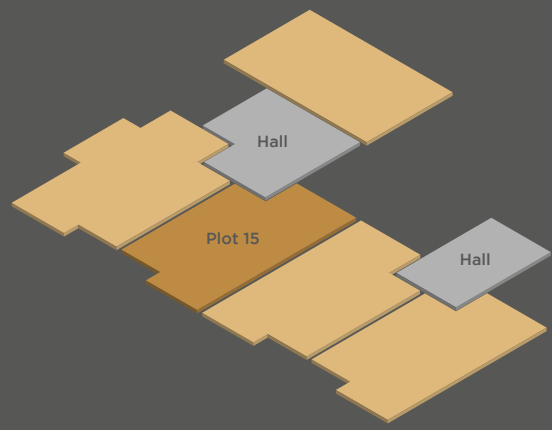
The floorplan provided is of a typical house style. Some elements of the detailing have been digitally enhanced and may vary to that found at Calderwood Lodge. Your sales consultant will be able to provide you with the full details of each plot and house type in this brochure. The particular illustrations and plans presented in this brochure are intended to give a fair description of the property but their accuracy is not guaranteed and they do not form part of any contract. CCG Homes reserve the right to alter property dimensions and specification as necessary.

C O N T E M P O R A R Y
C O L L E C T I O N

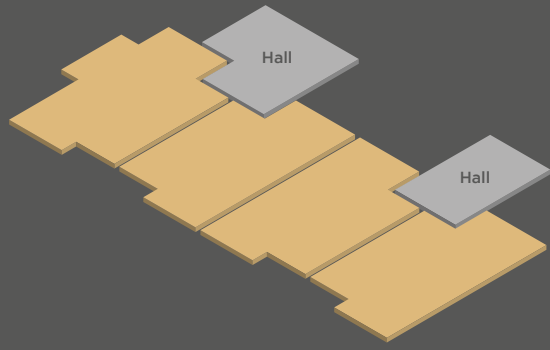
P L O T L O C A T O R



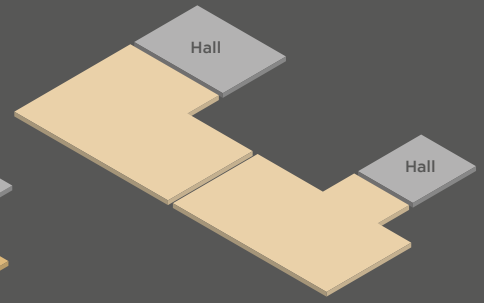
G r o u n d f l o o r



F i r s t f l o o r



S e c o n d f l o o r



T h i r d f l o o r



CONTEMPORARY
COLLECTION

PLOT 16
1105 SQFT



C O N T E M P O R A R Y

C O L L E C T I O N

P L O T 1 6

2 B E D R O O M A P A R T M E N T

1 0 3 3 S Q F T

Living / Dining

5.52m x 4.47m

18.1' x 14.7'

Hall

2.37m x 2.37m

7.7' x 7.7'

Kitchen

3.00m x 5.94m

9.8' x 19.4'

Store

2.37m x 0.70m

7.7' x 2.3'

Bedroom 1

4.50m x 4.36m

14.7' x 14.3'

Wardrobe 1

2.60m x 0.62m

8.5' x 2.0'

Ensuite

2.51m x 1.73m

8.2' x 5.6'

Wardrobe 2

2.59m x 0.57m

8.5' x 1.8'

Bedroom 2

3.58m x 3.16m

11.7' x 10.3'

Wardrobe 3

1.87m x 0.57m

6.1' x 1.8'

Bathroom

2.80m x 1.85m

9.1' x 6.0'

Meter

0.50m x 0.90m

1.6' x 2.9'

Utility

1.30m x 1.20m

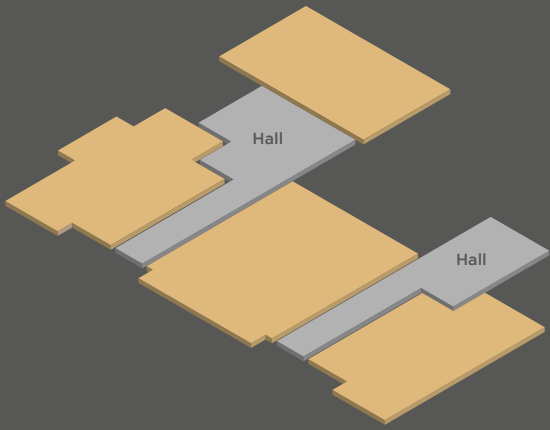
4.2' x 3.9'



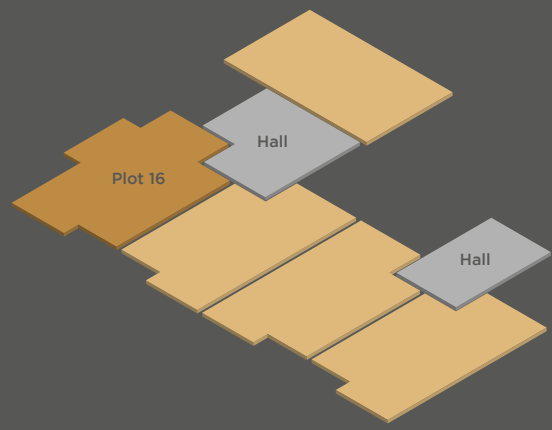
The floorplan provided is of a typical house style. Some elements of the detailing have been digitally enhanced and may vary to that found at Calderwood Lodge. Your sales consultant will be able to provide you with the full details of each plot and house type in this brochure. The particular illustrations and plans presented in this brochure are intended to give a fair description of the property but their accuracy is not guaranteed and they do not form part of any contract. CCG Homes reserve the right to alter property dimensions and specification as necessary.

C O N T E M P O R A R Y
C O L L E C T I O N

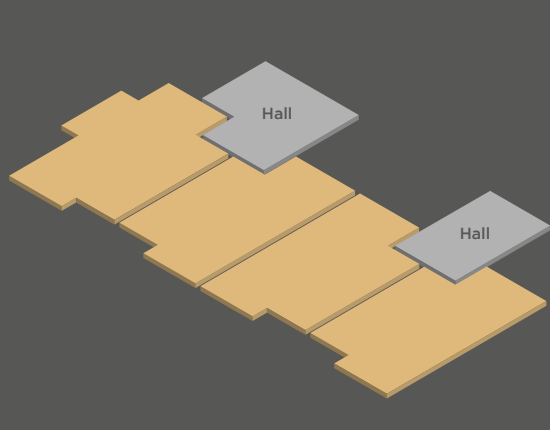
P L O T L O C A T O R



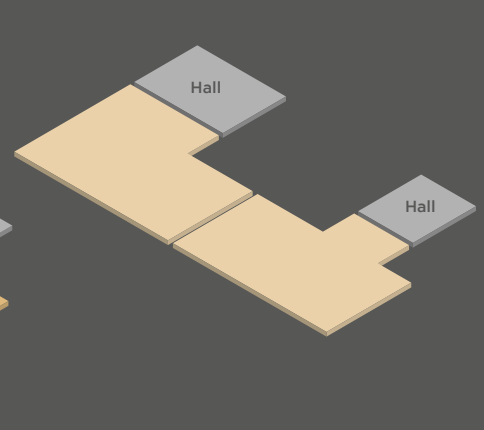
G r o u n d f l o o r



F i r s t f l o o r



S e c o n d f l o o r



T h i r d f l o o r



CONTEMPORARY
COLLECTION

PLOT 17
979 SQFT



CONTEMPORARY
COLLECTION

PLOT 17

2 BEDROOM APARTMENT

1109 SQFT

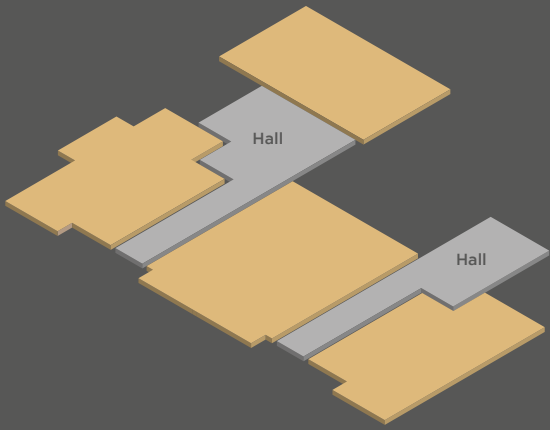
Living 4.70m x 4.79m 15.4' x 15.7'	Utility / Store 2.00m x 2.09m 6.5' x 6.8'
Kitchen / Dining 4.70m x 2.62m 15.4' x 8.6'	Hall 3.60m x 3.50m 11.8' x 11.4'
Bedroom 1 3.55m x 3.80m 11.6' x 12.5'	Store 0.95m x 0.59m 3.1' x 1.9'
Ensuite 1.70m x 2.40m 5.5' x 7.8'	Wardrobe 1 3.67m x 0.57m 12.0' x 1.8'
Bedroom 2 3.12m x 2.90m 10.2' x 9.5'	Wardrobe 2 1.60m x 0.57m 5.2' x 1.8'
Bathroom 1.90m x 3.11m 6.2' x 10.2'	Meter 0.60m x 0.70m 1.9' x 2.3'



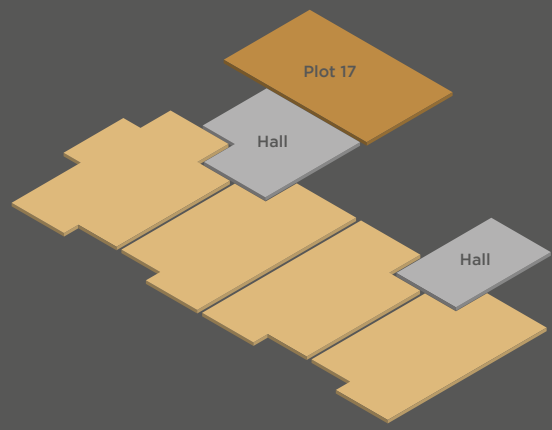
The floorplan provided is of a typical house style. Some elements of the detailing have been digitally enhanced and may vary to that found at Calderwood Lodge. Your sales consultant will be able to provide you with the full details of each plot and house type in this brochure. The particular illustrations and plans presented in this brochure are intended to give a fair description of the property but their accuracy is not guaranteed and they do not form part of any contract. CCG Homes reserve the right to alter property dimensions and specification as necessary.

C O N T E M P O R A R Y
C O L L E C T I O N

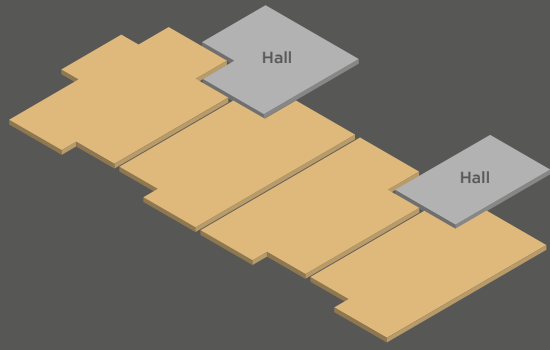
P L O T L O C A T O R



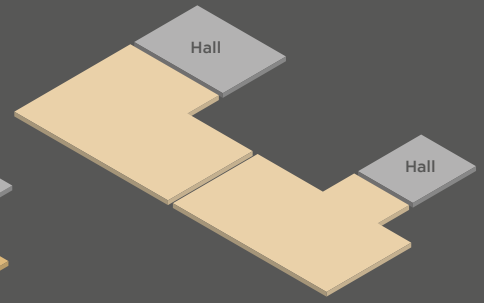
Ground floor



First floor



Second floor



Third floor



CONTEMPORARY
COLLECTION

PLOT 18

1019 SQFT



CONTEMPORARY
COLLECTION

PLOT 18

2 BEDROOM APARTMENT

1023 SQFT

Living / Dining

5.52m x 4.42m
19.0' x 14.5'

Kitchen

3.00m x 4.42m
8.8' x 14.5'

Bedroom 1

4.52m x 3.15m
14.8' x 10.3'

Ensuite

3.16m x 1.81m
10.3' x 5.9'

Bedroom 2

3.58m x 3.16m
11.7' x 10.3'

Bathroom

2.79m x 1.85m
9.1' x 6.0'

Utility

1.30m x 1.20m
4.2' x 3.9'

Hall

2.37m x 2.37m
7.7' x 7.7'

Store

2.37m x 0.70m
7.7' x 2.3'

Wardrobe 1

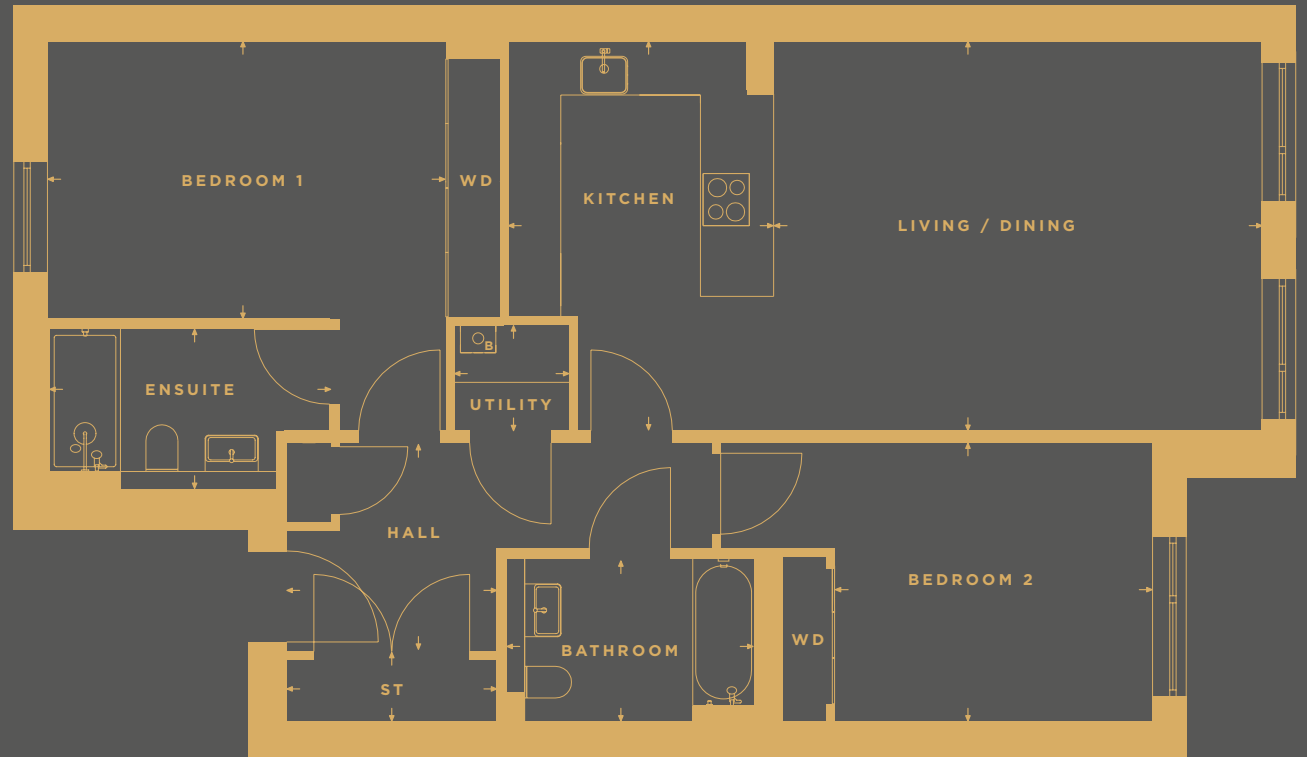
2.93m x 0.57m
9.6' x 1.8'

Wardrobe 2

1.87m x 0.57m
6.1' x 1.8'

Meter

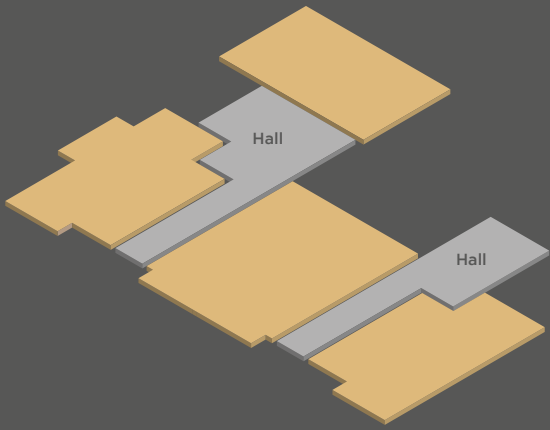
0.50m x 0.90m
1.6' x 2.9'



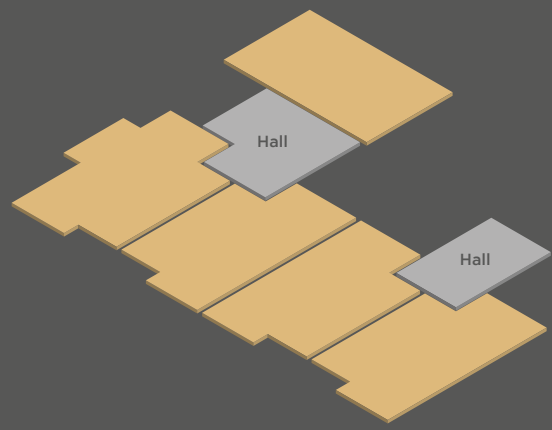
The floorplan provided is of a typical house style. Some elements of the detailing have been digitally enhanced and may vary to that found at Calderwood Lodge. Your sales consultant will be able to provide you with the full details of each plot and house type in this brochure. The particular illustrations and plans presented in this brochure are intended to give a fair description of the property but their accuracy is not guaranteed and they do not form part of any contract. CCG Homes reserve the right to alter property dimensions and specification as necessary.

C O N T E M P O R A R Y
C O L L E C T I O N

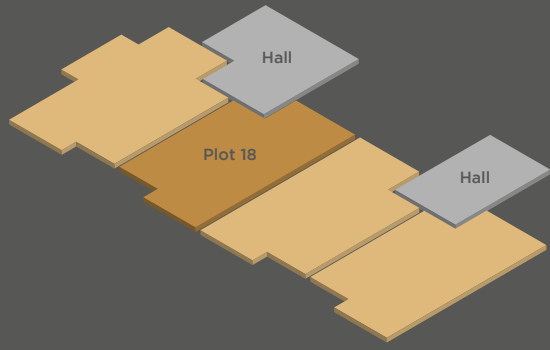
P L O T L O C A T O R



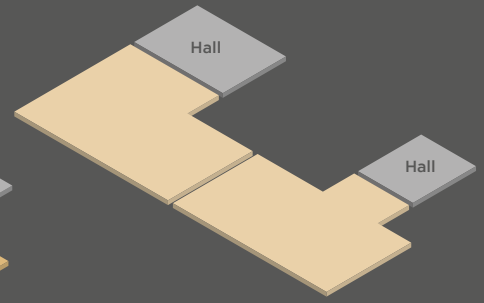
G r o u n d f l o o r



F i r s t f l o o r



S e c o n d f l o o r



T h i r d f l o o r



CONTEMPORARY
COLLECTION

PLOT 19
1105 SQFT



CONTEMPORARY
COLLECTION

PLOT 19

2 BEDROOM APARTMENT
1023 SQFT

Living / Dining
5.52m x 4.47m
18.0' x 14.7'

Hall
2.37m x 2.37m
7.7' x 7.7'

Kitchen
3.00m x 5.94m
9.9' x 19.4'

Store
2.37m x 0.70m
7.7' x 2.3'

Bedroom 1
4.50m x 4.36m
14.7' x 14.3'

Wardrobe 1
2.59m x 0.57m
8.5' x 1.8'

Ensuite
2.51m x 1.73m
8.2' x 5.6'

Wardrobe 2
2.60m x 0.62m
8.5' x 2.0'

Bedroom 2
3.58m x 3.16m
11.7' x 10.3'

Wardrobe 3
1.87m x 0.57m
6.1' x 1.8'

Bathroom
2.80m x 1.85m
9.1' x 6.0'

Meter
0.50m x 0.90m
1.6' x 2.9'

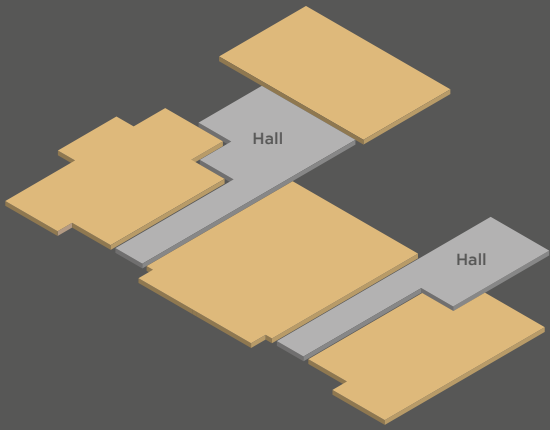
Utility
1.30m x 1.19m
4.2' x 3.9'



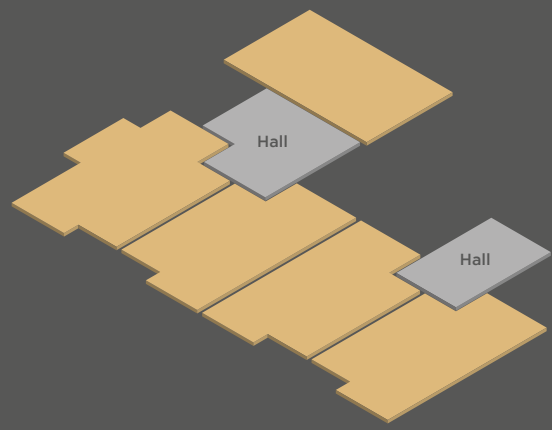
The floorplan provided is of a typical house style. Some elements of the detailing have been digitally enhanced and may vary to that found at Calderwood Lodge. Your sales consultant will be able to provide you with the full details of each plot and house type in this brochure. The particular illustrations and plans presented in this brochure are intended to give a fair description of the property but their accuracy is not guaranteed and they do not form part of any contract. CCG Homes reserve the right to alter property dimensions and specification as necessary.

C O N T E M P O R A R Y
C O L L E C T I O N

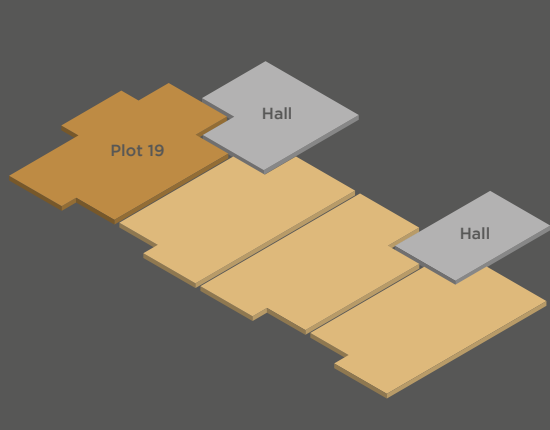
P L O T L O C A T O R



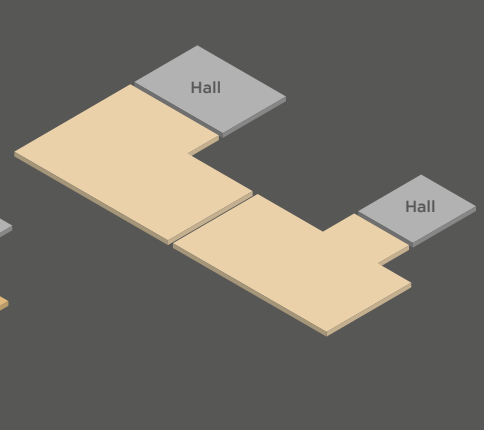
G r o u n d f l o o r



F i r s t f l o o r



S e c o n d f l o o r



T h i r d f l o o r