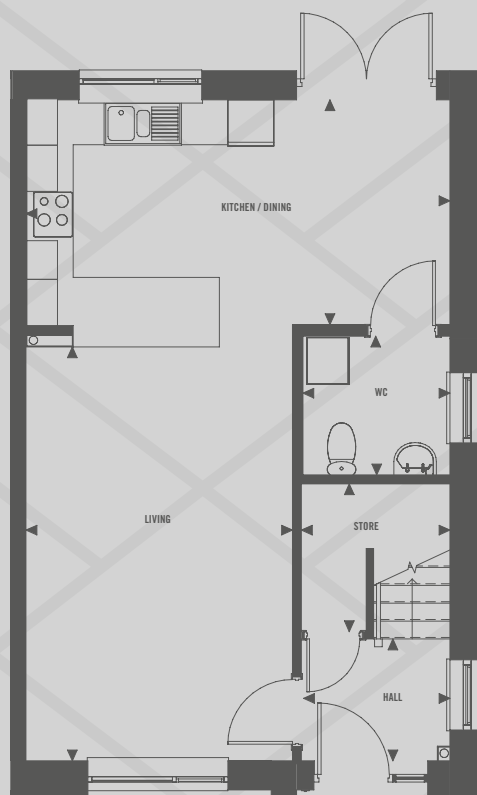


HOUSE TYPES

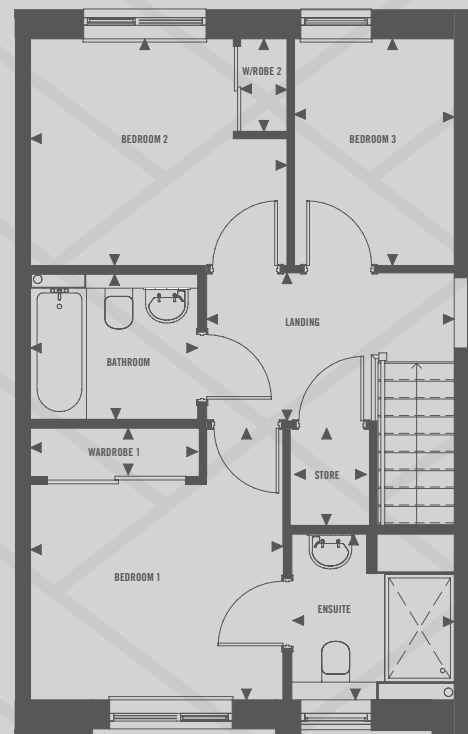
THE DUNLOP

3 BEDROOM END TERRACE (SEMI DETACHED)



GROUND FLOOR

Living	5.40m x 3.45m	17.72' x 11.32'
Kitchen / Dining	5.48m x 2.92m	17.96' x 9.56'
WC	1.90m x 1.80m	6.23' x 5.91'
Store	1.92m x 1.91m	6.30' x 6.25'
Hall	1.58m x 1.92m	5.18' x 6.30'



FIRST FLOOR

Bedroom 1	3.50m x 3.27m	11.48' x 10.73'
Bedroom 2	2.90m x 3.30m	9.52' x 10.83'
Bedroom 3	2.90m x 2.07m	9.52' x 6.79'
Bathroom	1.87m x 2.14m	6.14' x 7.02'
Landing	3.20m x 1.98m	10.50' x 6.50'
Store	1.02m x 1.24m	3.35' x 4.05'
Wardrobe 1	0.50m x 2.20m	1.64' x 7.22'
Wardrobe 2	1.20m x 0.60m	3.94' x 1.97'
Ensuite	2.15m x 2.10m	7.05' x 6.89'

PLOT NUMBERS

271, 276, 285, 290, 292, 293*, 296* & 300* (*Handed)

The floorplan provided is of a typical house style. Some elements of the detailing have been digitally enhanced and may vary to that found at Riverford Gardens. Your sales consultant will be able to provide you with the full details of each plot and house type in this brochure. The particular illustrations and plans presented in this brochure are intended to give a fair description of the property but their accuracy is not guaranteed and they do not form part of any contract. CCG Homes reserve the right to alter property dimensions and specification as necessary.