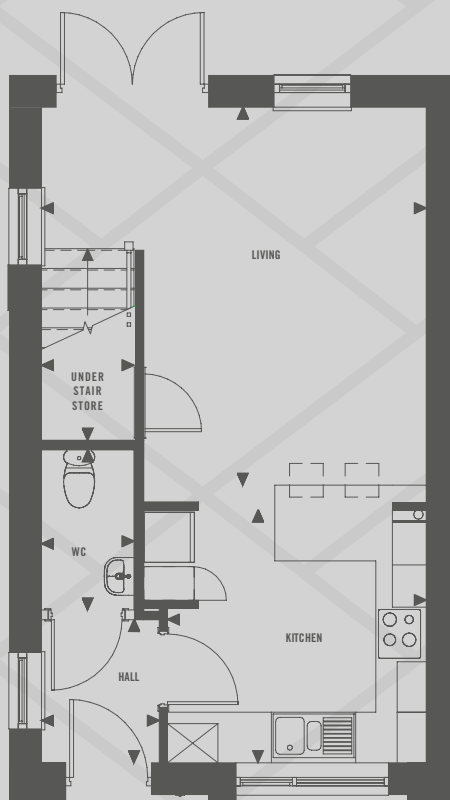


HOUSE TYPES

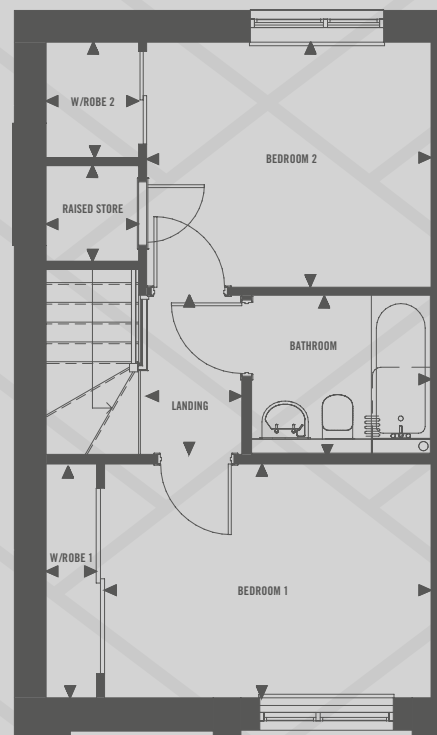
# THE MAXWELL

2 BEDROOM MID / END TERRACE



**GROUND FLOOR**

Living	4.57m x 4.49m	14.99' x 14.73'
Kitchen	3.00m x 3.00m	9.84' x 9.84'
WC	1.87m x 1.15m	6.12' x 3.77'
Under Stair Store	1.07m x 1.10m	3.51' x 3.61'



**FIRST FLOOR**

Bedroom 1	3.88m x 2.75m	12.73' x 9.02'
Bedroom 2	3.38m x 2.86m	11.09' x 9.39'
Bathroom	1.94m x 2.10m	6.37' x 6.89'
Landing	1.98m x 1.20m	6.51' x 3.94'
Raised Store	1.14m x 1.10m	3.72' x 3.61'
Wardrobe 1	0.60m x 2.75m	1.97' x 9.02'
Wardrobe 2	1.37m x 1.10m	4.49' x 3.61'

**PLOT NUMBERS**

238, 239, 245, 246, 254, 255, 256, 257,  
258, 259, 261, 264, 267, 268, 280 & 302

The floorplan provided is of a typical house style. Some elements of the detailing have been digitally enhanced and may vary to that found at Western Terrace. Your sales consultant will be able to provide you with the full details of each plot and house type in this brochure. The particular illustrations and plans presented in this brochure are intended to give a fair description of the property but their accuracy is not guaranteed and they do not form part of any contract. CCG Homes reserve the right to alter property dimensions and specification as necessary.